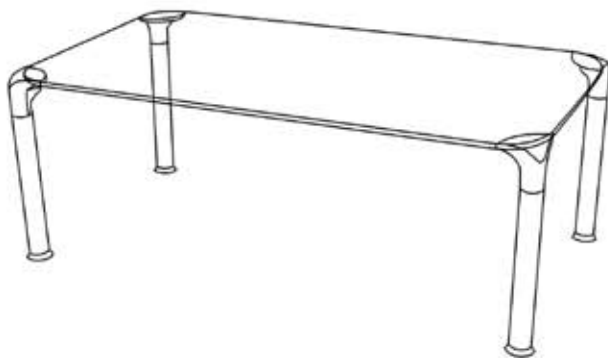
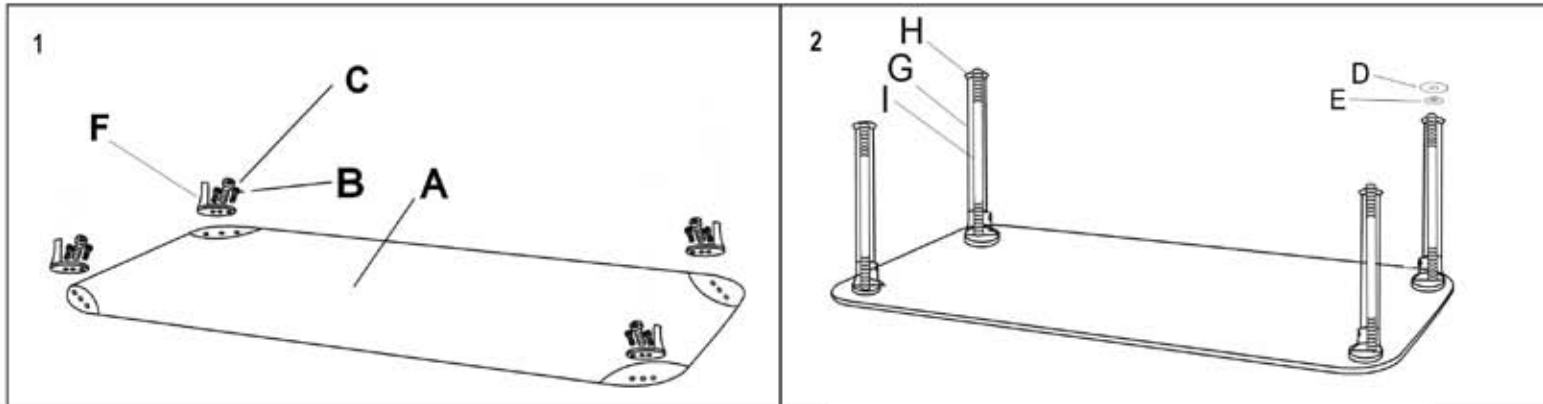


Assembly Diagram



Model No: C52B50CM



A		Top Glass	1
B		Small Screw	12
C		Small Washer	12
D		Large Nut	4
E		Large Washer	4
F		Corner Trim	4
G		Leg	4
H		Decorative Foot	4
I		Rod	4

Assembly Instructions

C52B50CM

Important: Make sure all parts are available for assembly
Follow instruction steps very carefully

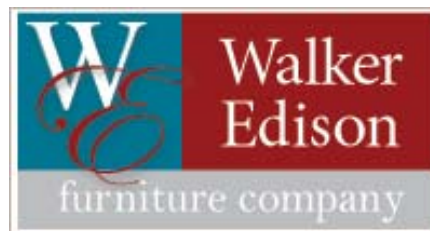
Step 1: Lay glass “A” upside down on a soft surface
Screw corner trim “F” down using screws “B” and washers “C”
Screw rod “I” in the middle hole
Use same process for each leg

Warning: Tighten but be careful to not over tighten

Step 2: Place legs “G” over rod “I”
Place decorative foot “H” on top of legs “G”
Secure in place using large washer E” and large nut “D”

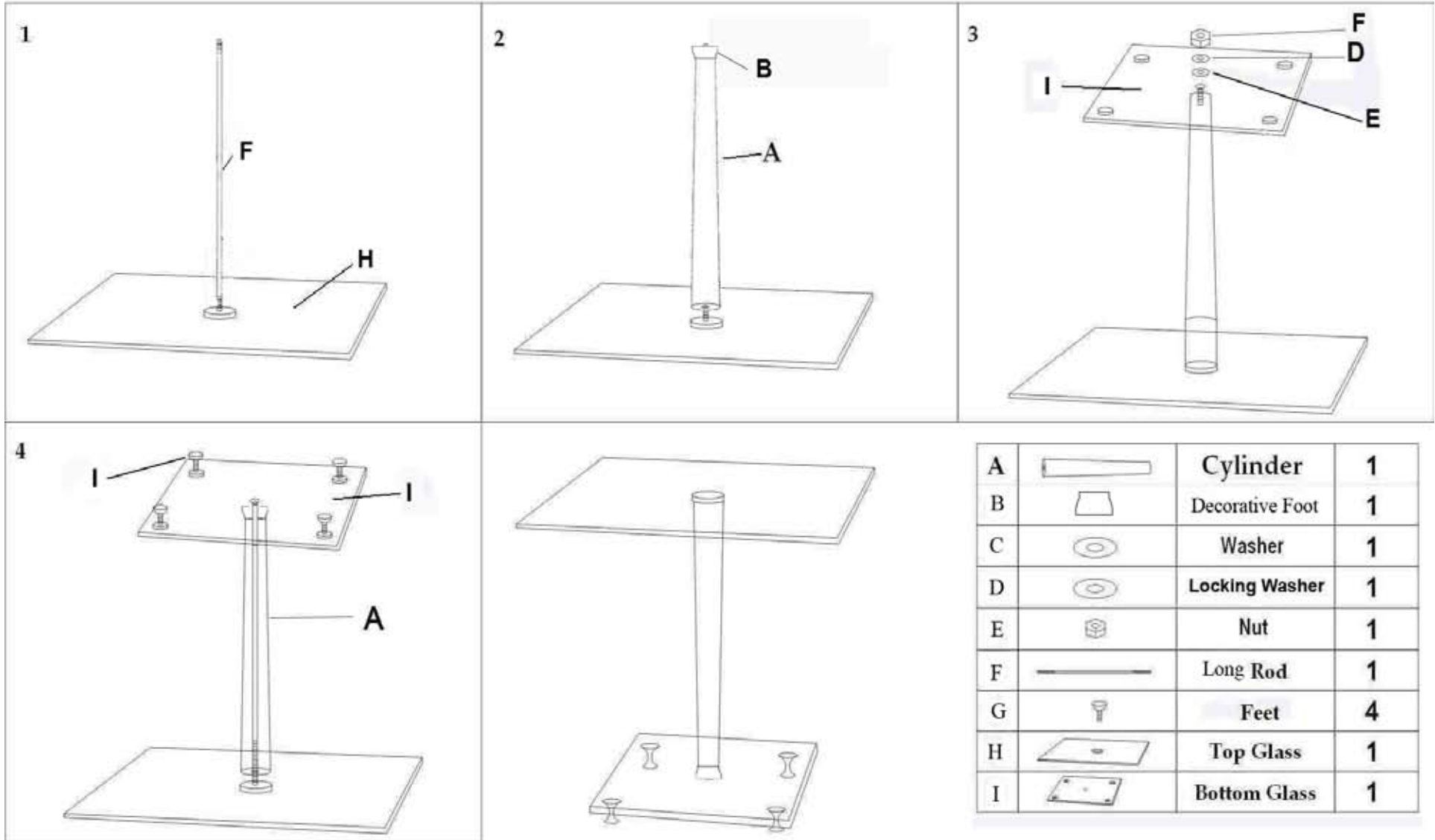
Step 3: Turn table upright very carefully

For our most up to date instruction, to request missing, lost, or broken parts, or for any other Customer Service issues, please visit our website at www.walkeredison.com or call us at 877-203-2917.



Assembly Diagram

Model No: C52B50CM



A		Cylinder	1
B		Decorative Foot	1
C		Washer	1
D		Locking Washer	1
E		Nut	1
F		Long Rod	1
G		Feet	4
H		Top Glass	1
I		Bottom Glass	1

Assembly Instructions

C52B50CM

Important: Make sure all parts are available for assembly
Follow instruction steps very carefully

Step 1: Lay glass “H” upside down on a soft surface
Screw rod “F” glass “H”
Place cylinder “A” on rod “F”
Place decorative foot “B” on top of cylinder “A”

Step 2: Place bottom glass “I” on rod “F”
Place locking washer “D” on rod “F” followed by washer “C”
Tighten securely using nut “E”

Warning: Tighten but be careful to not over tighten

Step 3: Turn table upright very carefully

For our most up to date assembly instructions or to request missing, lost, or broken parts, or for any other customer service issue, please visit our website at www.walkerredison.com for immediate attention.

